

利是送暖

福杯满溢

Abundance Always. Blessings Everywhere.



Population growth, industrial development, coupled with climate change and environmental pollution, have led to a severe global water crisis. Currently, over 2.2 billion people lack access to safely managed drinking water, with the situation being most severe in Africa.

In water-scarce communities, the responsibility of fetching water often falls on women and children. They may walk for hours each day to reach distant water sources, exhausting significant energy and time, and depriving children of the opportunity to attend school. Moreover, the quality of the water sources is unreliable, posing a serious threat to the healthy development of children.

World Vision would like to invite students in Hong Kong to donate their **Red Packets** this Lunar New Year, to support World Vision WASH (Water, Sanitation and Hygiene) programmes in Africa:

- To **construct boreholes** that provide clean drinking water, bringing lasting convenience and relief to communities in need.
- Increase access to hygiene and sanitation services at school by **building handwashing facilities**, improving the health of children who are especially vulnerable to waterborne diseases.
- To **construct VIP latrines** in schools, to reduce the spread of disease, create a healthier learning environment, and improve school attendance rate.

Activity Period: February to March, 2026

Enrollment Deadline: 9 February, 2026

Enquiry: 2399 3427 Ms. Winnie Chan

Website : <https://www.worldvision.org.hk/en/redpacket/school>



In the Mafeteng district of Lesotho, extreme weather has caused severe water shortages. Students need to fetch water from polluted rivers during school hours, disrupting their learning. Poor sanitation facilities also leads to frequent outbreaks of waterborne diseases, threatening the students' health



World Vision installed a water system and constructed sanitation facilities at the school. "We now wash our hands, our lunch boxes, and drink clean water every day," says Mokhoele, 11. "We even help water the vegetables. We're proud of our school now."

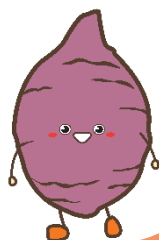
▶ Donation Methods

1. Donation Box

Borrow donation boxes from World Vision to collect red packets. We will inform schools about the arrangements and delivery dates of the donation boxes.

2. Crossed Cheque

3. Bank Account Transfer



▶ Supporting Materials

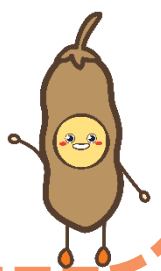
1. E-Poster

2. Campaign Red Packets

3. Stickers (KIN and PRI schools)

Fai-chuns (SEC schools)

4. Certificate of Appreciation




利是送暖

福杯满溢

Abundance Always. Blessings Everywhere.



Supporting Materials

World Vision  LET THE HUNGRY BE HEARD

利是送暖

福杯满溢

Abundance Always. Blessings Everywhere.

Children take on the burden of collecting water, which deprives them of educational opportunities.

World Vision installed water system and latrine facilities at the community.

Currently, over 2.2 billion people lack access to safely managed drinking water. In water-scarce communities, children have to fetch water from distant polluted sources, which puts their health at risk and disrupts their education.

Donate a red packet to bless the children in need of clean water!

Date:

Name:

Address:

www.worldvision.org.hk/en/redpacket/school 2399 3427 edu@worldvision.org.hk



Campaign Red Packets

E-Poster



Stickers (KIN & PRI schools)



Fai-chuns (Secondary schools)

Your Red Packet 2026

Enrolment Form

Address: Public Education Department 2/F Mayfair Centre, 4 Anchor Street, Tai Kok Tsui, Kowloon
 Tel: (852) 2399 3427 Fax: (852) 2394 0566 Email: edu@worldvision.org.hk Website: www.worldvision.org.hk

Name of School: _____		Principal: _____	
Teacher-in-charge: _____		Position: _____	
Subject/Club: _____			
Address: _____			
Tel: _____ (School)		Tel: _____ (Mobile)	
Fax: _____			
Email: _____		(Your application will be confirmed through email)	
Date: From 2026 ____ (mm) ____ (dd) to ____ (mm) ____ (dd)			
Grade/Year: _____		No. of participants: _____	

Please "✓" the appropriate and fill in the required information:

Donation Box Borrowing

- Large donation box (30cm L x 22cm W x 20cm H) Total: _____ (Max. 2)
- Small donation box (17cm L x 12cm W x 18cm H) Total: _____ (Max. 5)

Arrangements:

1. After receiving your application, WV staff will contact you to confirm the dates of donation box delivery.
2. You shall receive a notice of the donation box delivery and collection arrangements through email. Please sign and reply the notice for the final confirmation.
3. WV will deliver and collect the donation box(es) according to the agreed dates.
4. WV will provide the donation receipt(s) and a certificate of appreciation to school after the campaign.

Crossed Cheque

Please make your cheque payable to **WORLD VISION HONG KONG** and write the School Name on the back of the cheque.

ATM / Bank Account Transfer

BANK OF CHINA (HK) 012-883-0-002552-0

Supporting Materials

- E-Poster (will be provided by email)
- Campaign Red Packets
- Stickers
- Fai-chuns

We would make use of your contact information to keep you updated on our educational activities.

※ Please indicate: I want / I do not want to receive updates from World Vision.

X _____

Principal's signature with school stamp

_____ (yyyy/mm/dd)
Date